

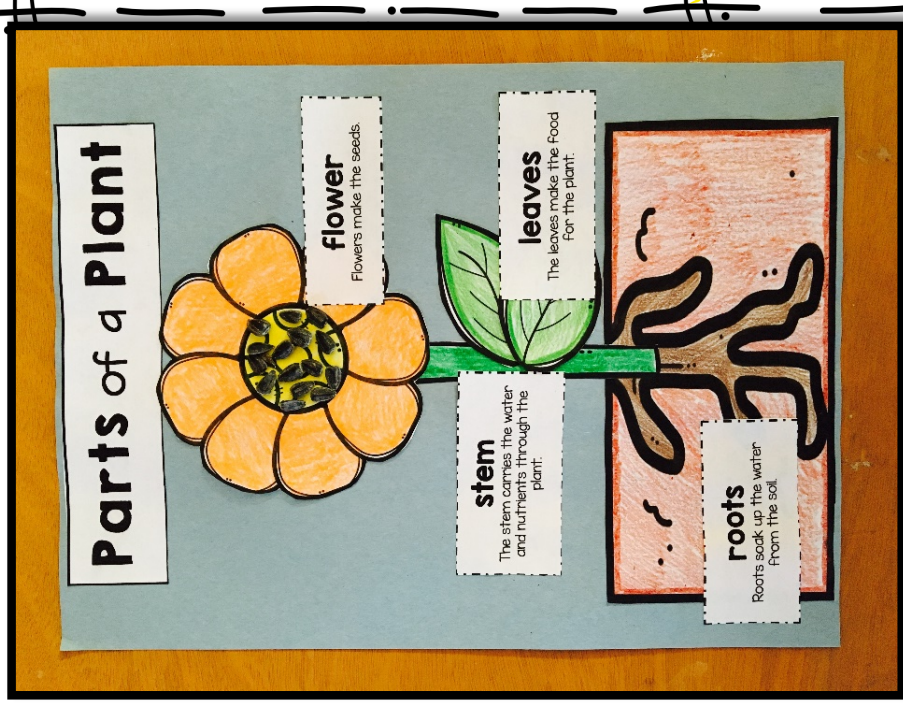
# parts of a plant Craftivity

## Materials:

- construction paper
- "parts of a plant" header (p.29)
- flower parts template (p.30)
- flower parts labels (p.31)
- crayons/markers
- scissors
- glue
- Optional: seeds*

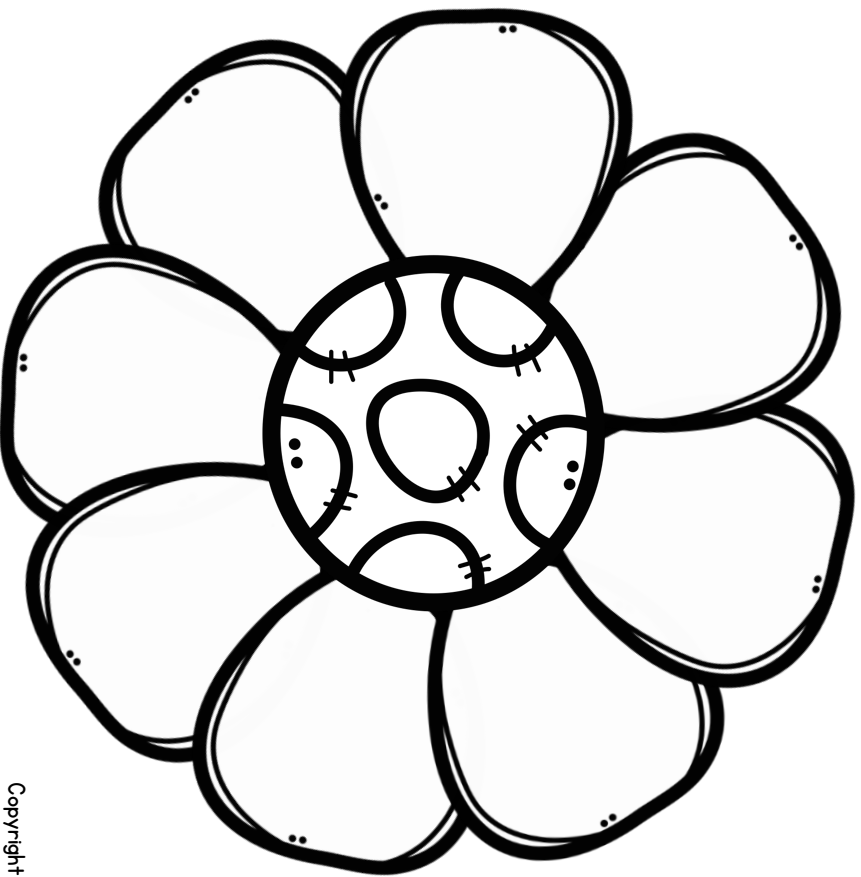
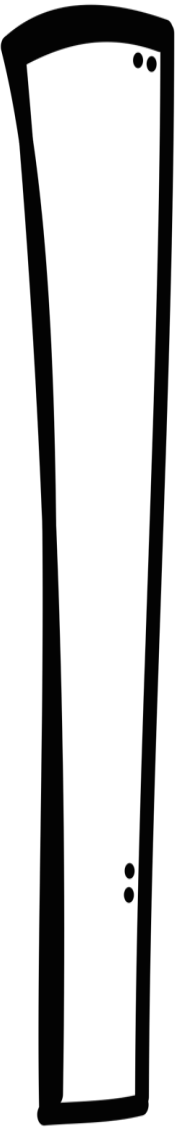
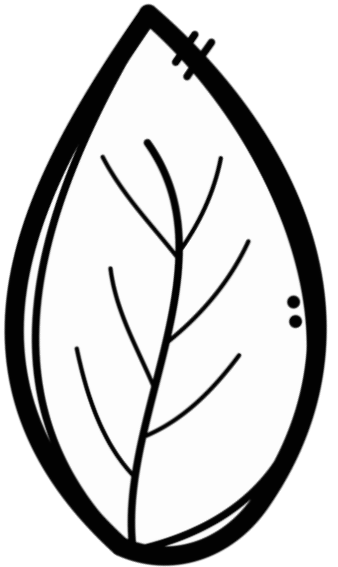
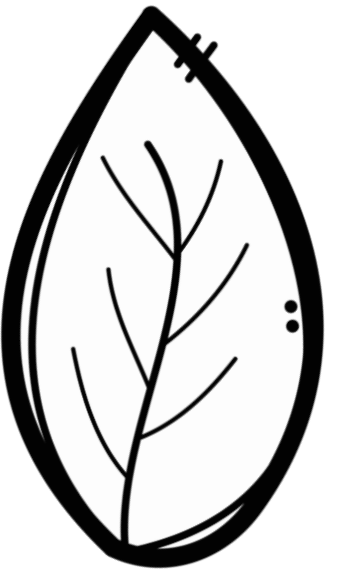
## Directions:

1. Print and copy pages 29-31.
2. Have students color and cut out the flowering plant parts. Instruct students to glue them onto a piece of construction paper and assemble the plant.
3. Glue seeds (for example, sunflower seeds) to the center of the flower, if desired.
4. Give each student one column of plant part labels. Students will now cut and paste the correct label near each part of the flowering plant.
5. Finally, use the "parts of a plant" header to label the craftivity!

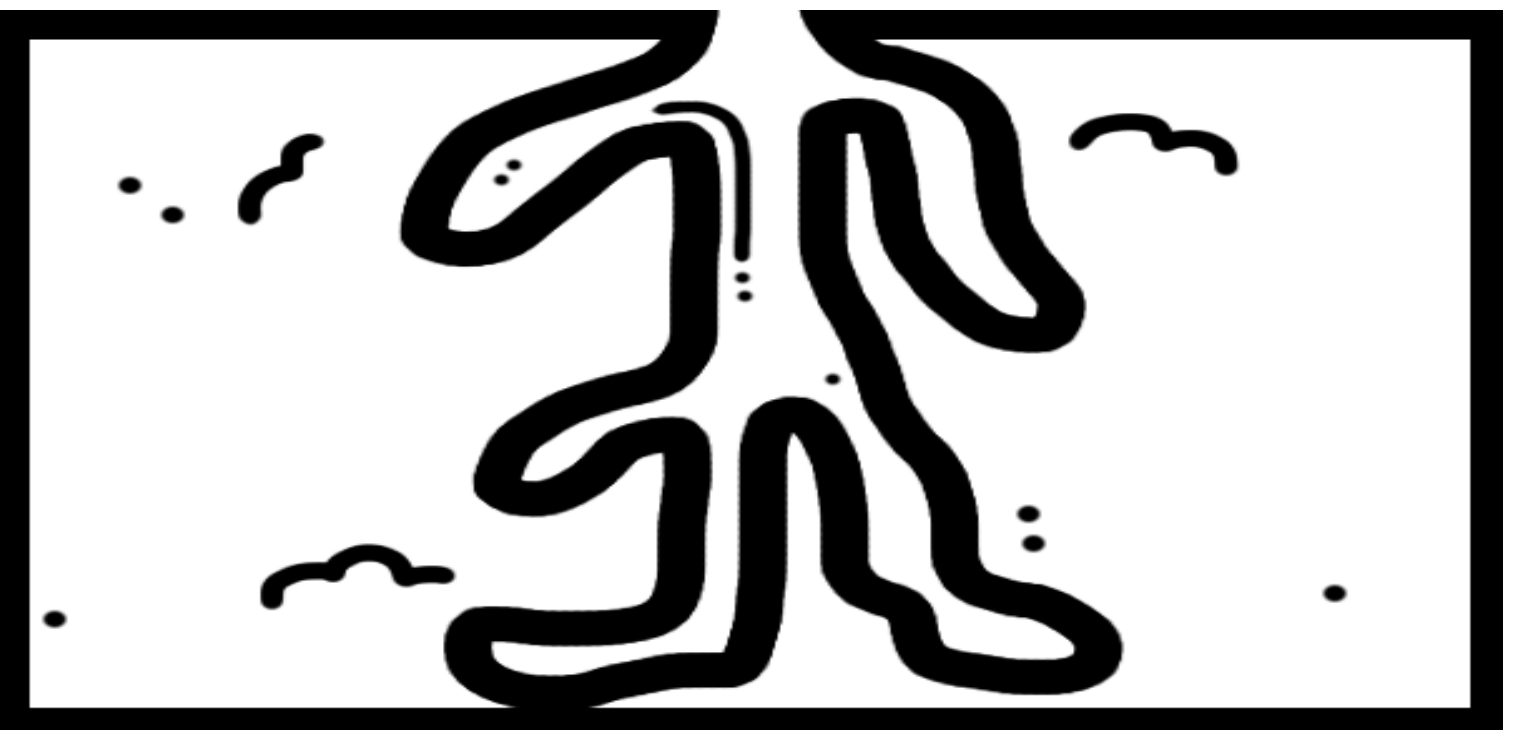


Copyright © 2013 Curriculum Castle

Parts of a Plant: parts to assemble



Copyright © 2013 Curriculum Castle



# Parts of a Plant

## roots

Roots soak up the water from the soil.

## stem

The stem carries the water and nutrients through the plant.

## leaves

The leaves make the food for the plant.

## flower

Flowers make the seeds.