

GREAT BEAR RAINFOREST

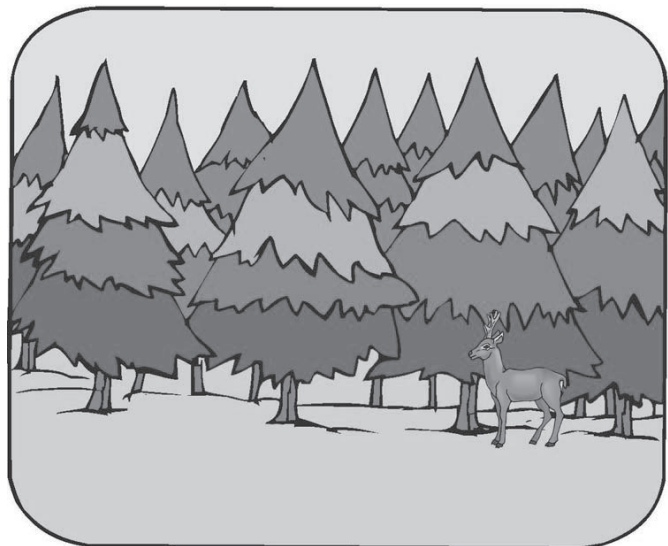
When you hear the word “rainforest,” you probably think of **jungles** in the Amazon or Africa. Did you know that British Columbia has a rainforest the size of Ireland? The Great Bear Rainforest on the west coast of Canada has many different plants and animals, such as a **rare** white bear. This **temperate** rainforest is a very special part of Canada.

Rainforests around the world are known for how much water falls in them every year. Like the tropical kind, temperate rainforests are very wet. Because they are in areas of the world with mild temperatures, these rainforests are called “temperate.”

The largest of these temperate rainforests is the Great Bear Rainforest on the west coast of British Columbia, north of Vancouver Island. In an average year, about 6650 millimetres of rain fall in the 72,000-square kilometre region, mostly in winter.

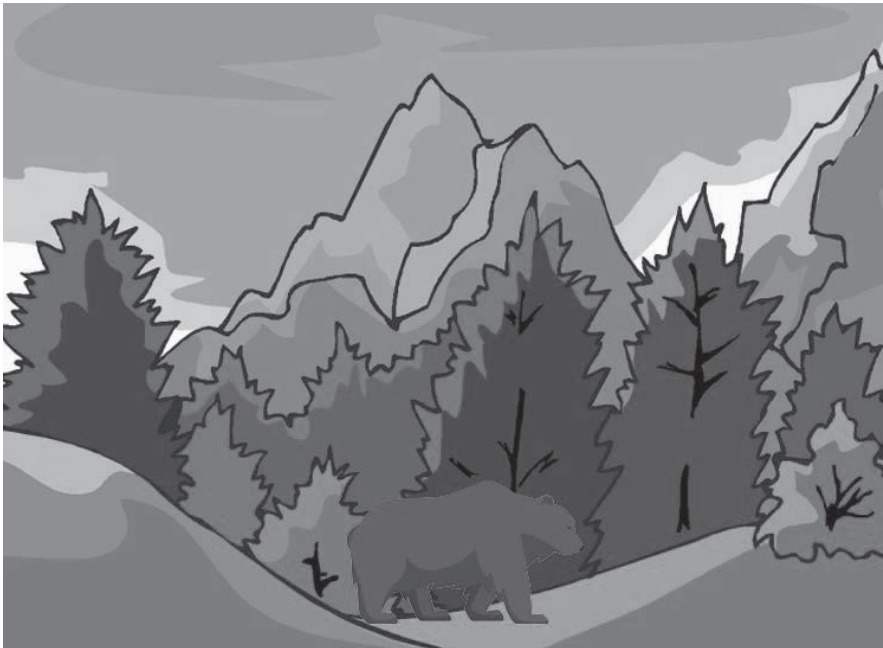
The Great Bear Rainforest is home to many different animals that live on land or in the ocean. Wolves, grizzly bears, deer, cougars, moose, and mountain goats are some of the land animals living in the rainforest. Some of the animals living in the ocean nearby are whales, salmon, sea lions, and otters.

The most special animal living in the Great Bear Rainforest could be the Kermode bear, also called the “spirit bear.” This is a black



bear whose fur is completely white. About one-tenth of the bears in the region are Kermode bears. Local Indigenous groups have many stories about these rare bears. The name of the rainforest also comes from these unusual animals.

Many different types of plants also grow in the area, including cedar and spruce trees that can be up to a thousand years old. The Great Bear Rainforest stores more carbon and produces more oxygen than any other temperate rainforest.



To view videos, go to:
<https://resources.dynamic-classroom.ca/books/zhdk>



Jungle: Land in warm, tropical areas near the equator that is thickly covered with trees, vines, and bushes.

Rare: Not often seen, found, or happening.

Temperate: Neither very warm nor very cold.

GREAT BEAR RAINFOREST QUESTIONS

1. Which province has a rainforest the size of Ireland?

2. Because temperate rainforests are in areas of the world with _____
_____, these rainforests are called “temperate.”

3. What is the largest of the temperate rainforests?

4. In an average year, about _____ of rain fall in the
72,000-square kilometre region, mostly in winter.

5. What are some of the land animals living in the rainforest?

6. The most special animal living in the Great Bear Rainforest could be
what?

7. The Kermode bear is a black bear, but its fur is completely _____.

8. Many different types of plants also grow in the area, including
_____ and _____ trees that can be up to a
thousand years old.