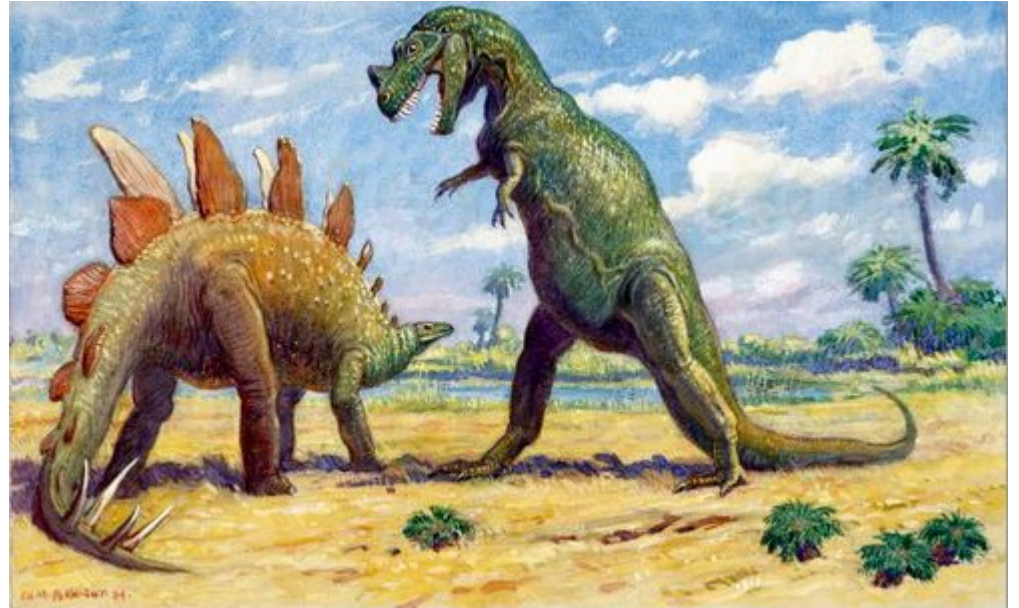
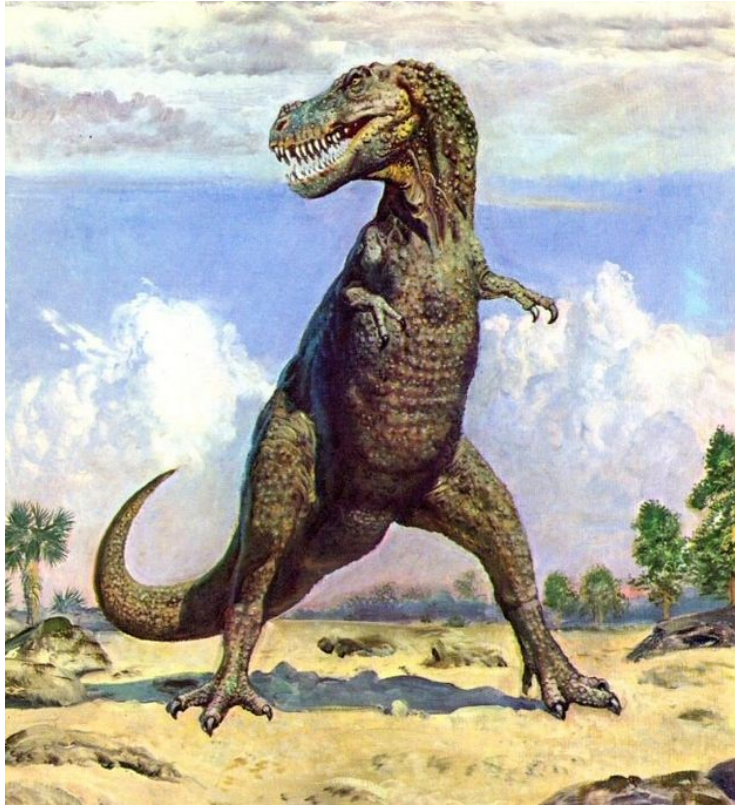


January 30th is “Draw a Dinosaur Day”!

On your paper, please draw/sketch what you picture when you think of a Tyrannosaurus Rex (T. Rex)

Examine your drawing. Did it look anything like this?



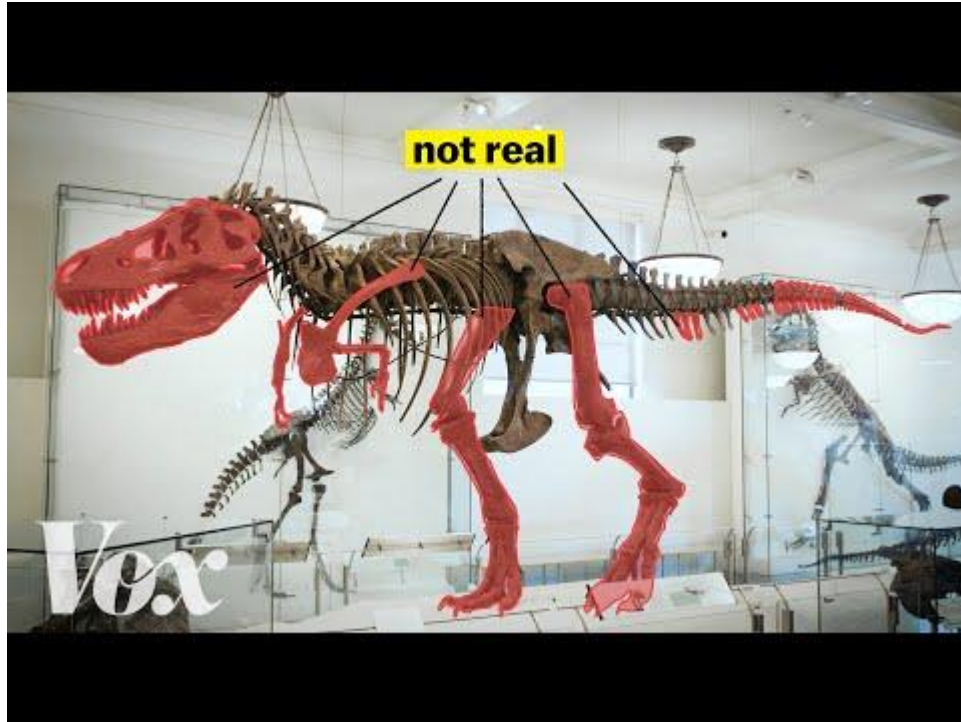
Or did your drawing look more like this?





Paleontology

Reconstructing Dinosaurs based on Fossil Evidence



Do Scientists always get it right?

Let's examine the Crystal Palace Park
Dinosaurs!









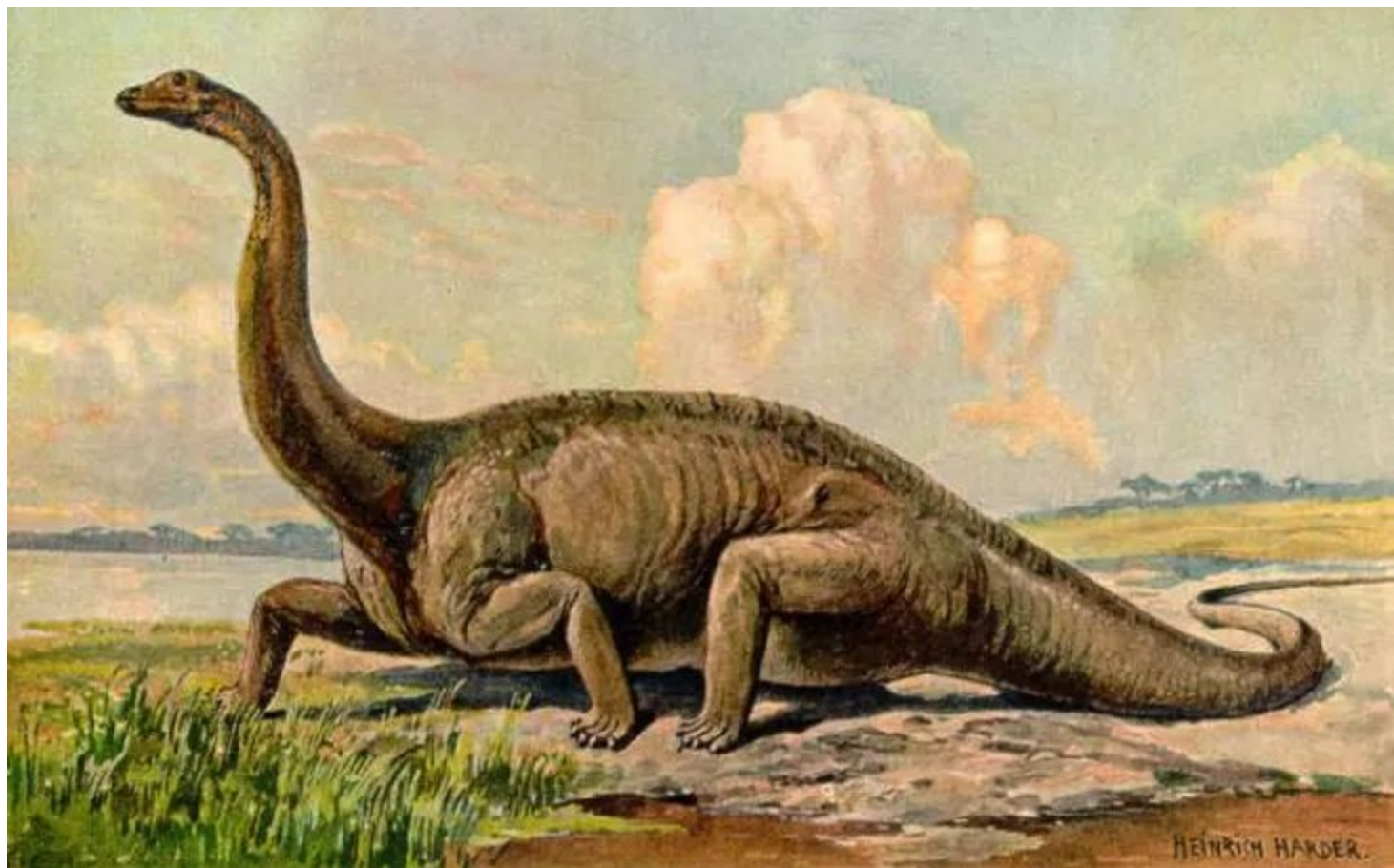


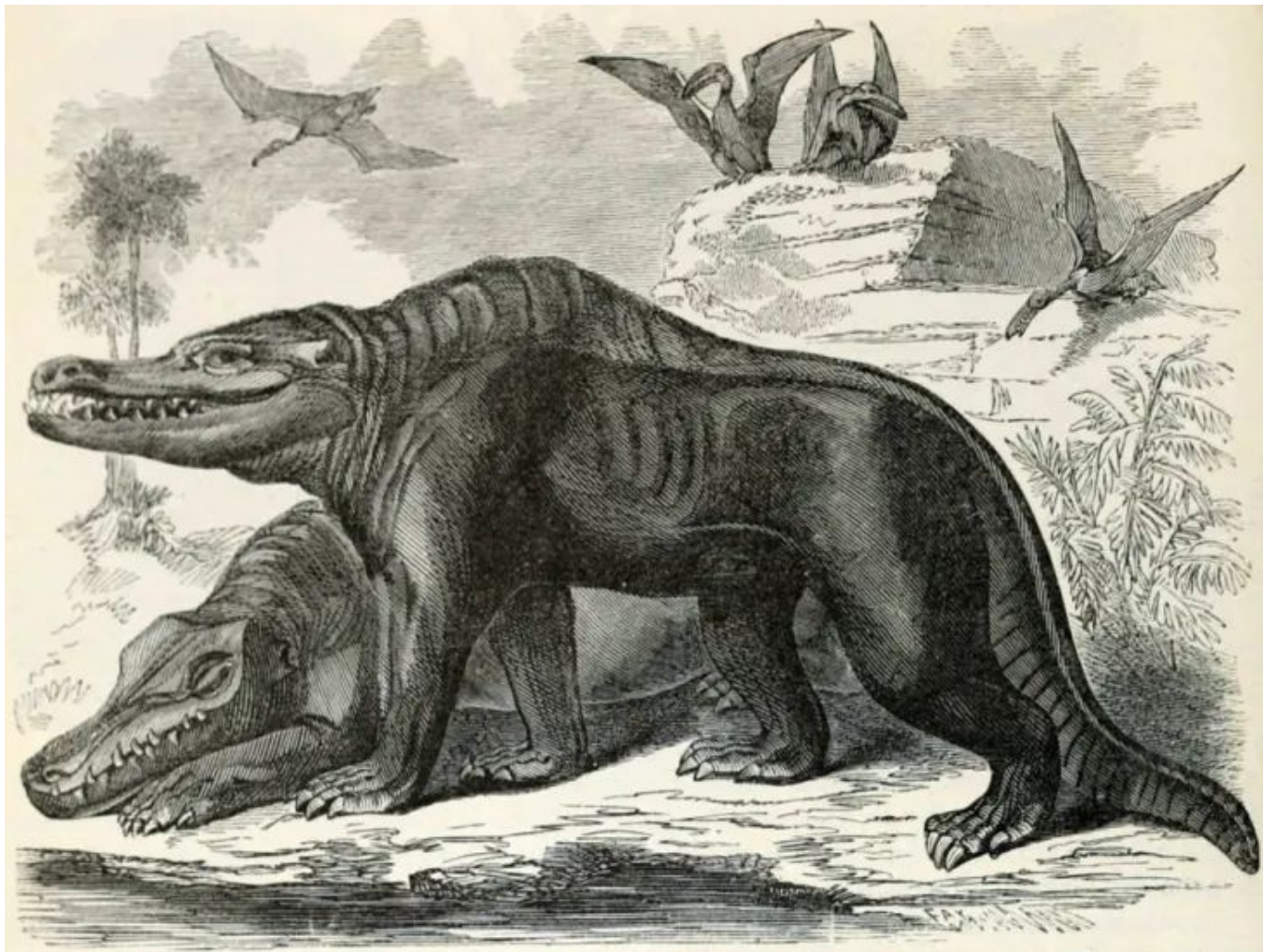


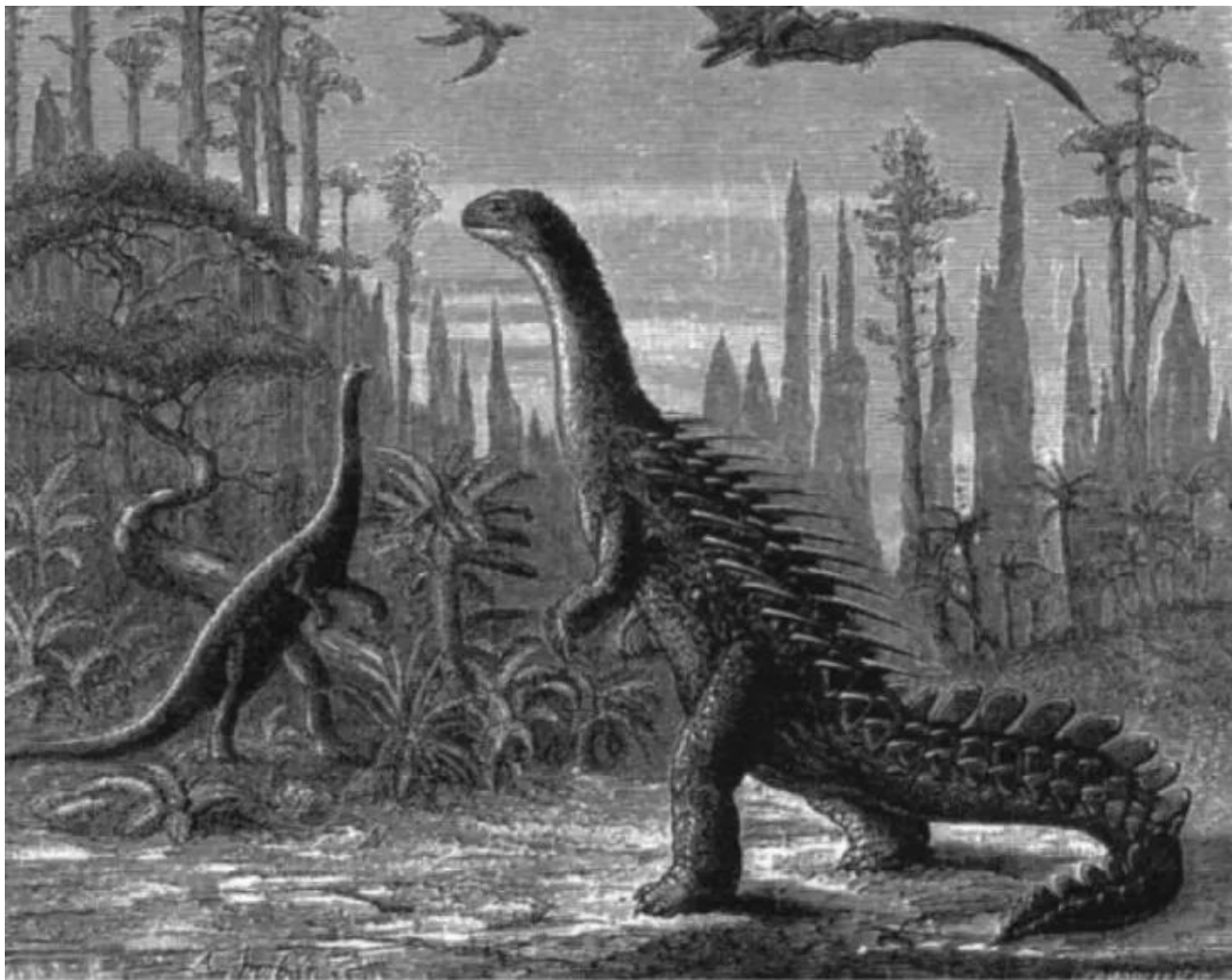




Why might it be challenging for artists + scientists to create accurate models or sketches?







1900s

1970s

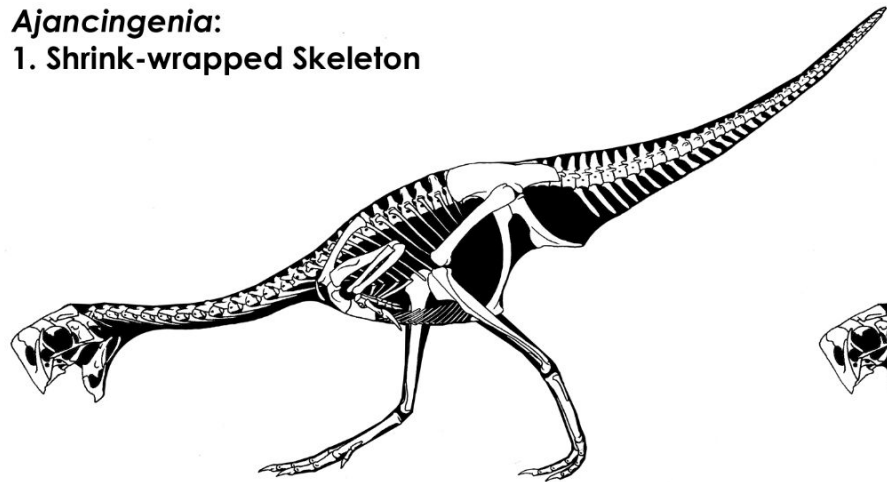
1990s

2010s

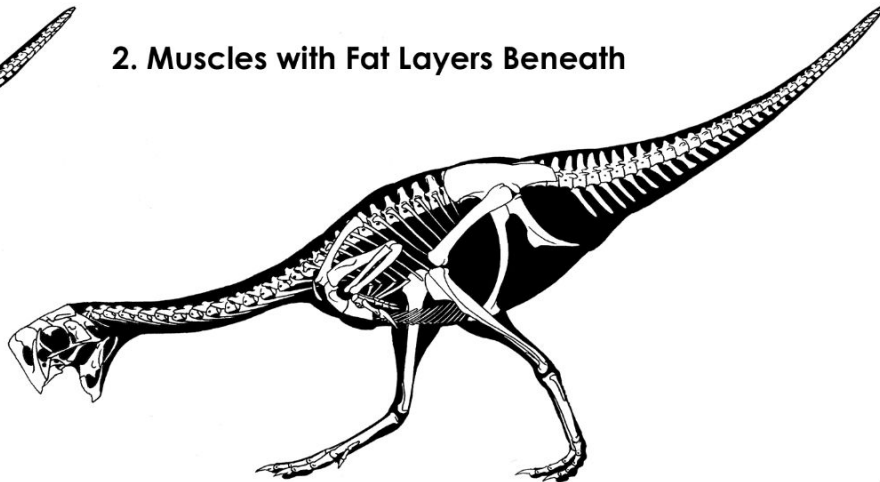


Ajancingenia:

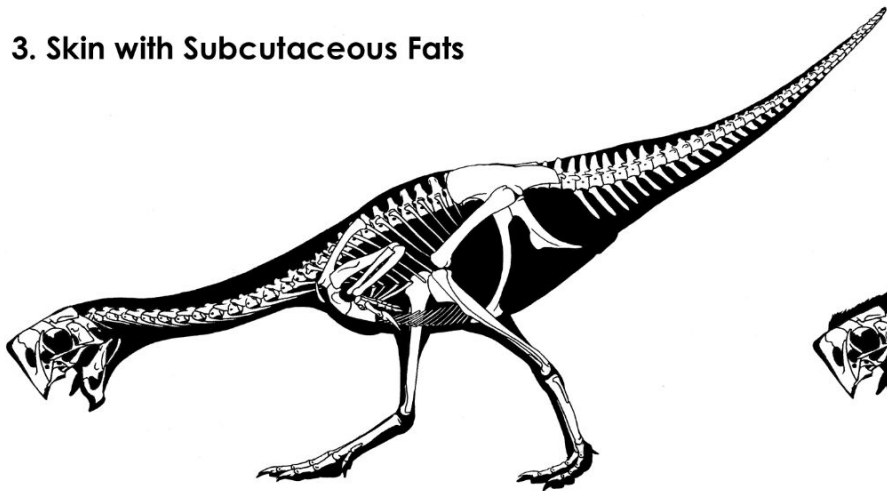
1. Shrink-wrapped Skeleton



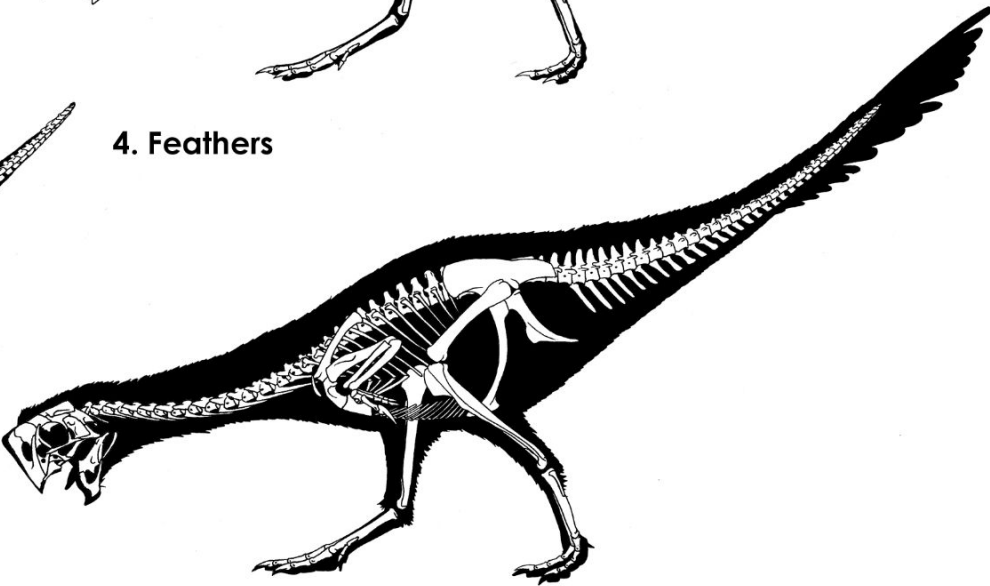
2. Muscles with Fat Layers Beneath



3. Skin with Subcutaneous Fats



4. Feathers



Today, you will try to 'assemble' a dinosaur!



Your challenge:

- 1) Cut out the dinosaur fossils (the 'bones')
- 2) Try to figure out how the 'pieces' fit together
- 3) Assemble your dinosaur. What can you INFER about this species?
 - a) Is it a herbivore, carnivore, etc.? What might it eat?
 - b) What habitat do you think it lived in (ex: water, forest, sky)?
 - c) How large do you think it was?

Meet *Scaphognathus*

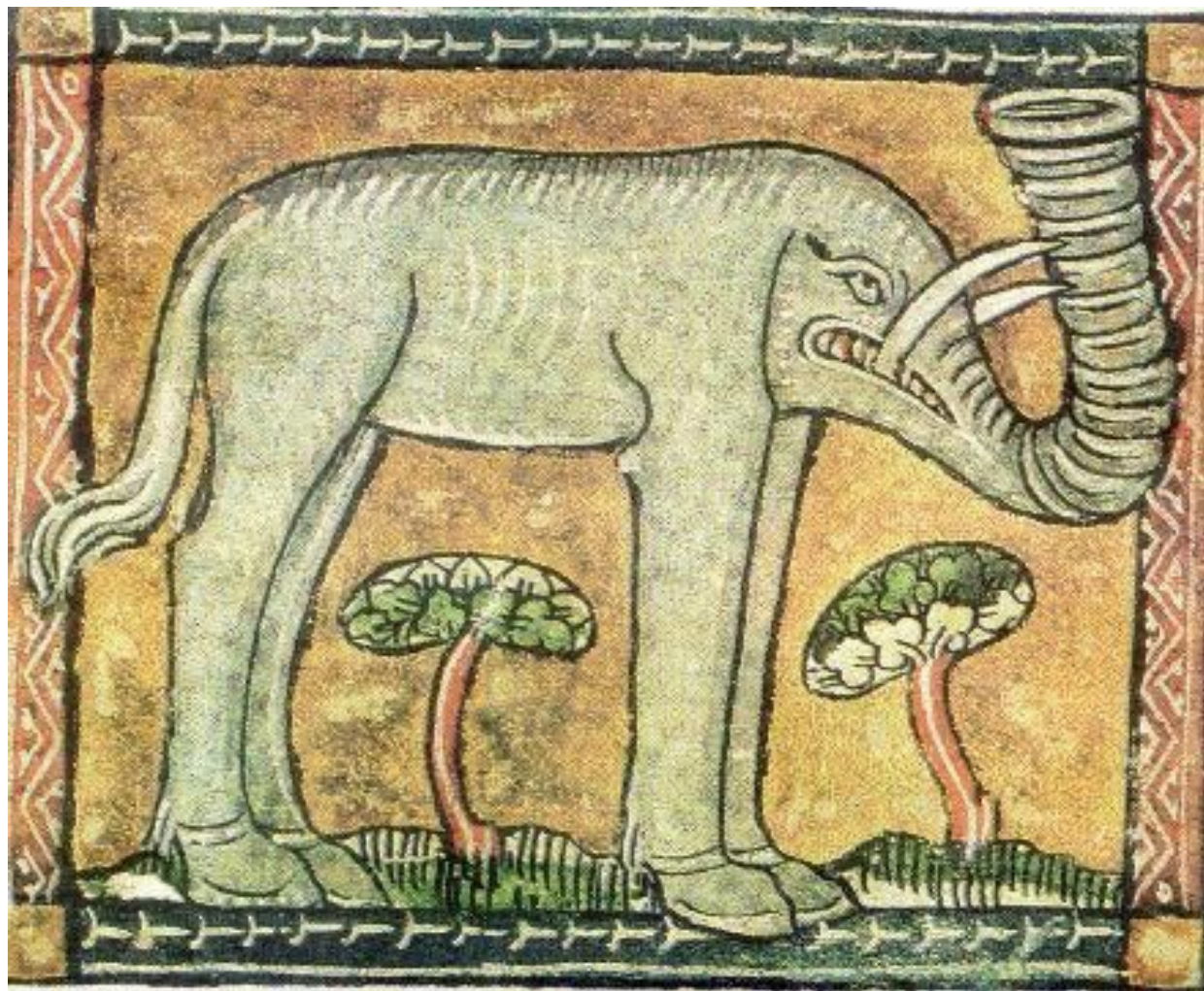


On your paper, please brainstorm/draw what you think this dinosaur might have looked like (when it was alive)



**When artists make mistakes
(Medieval Times edition)!**

**Can you guess what animal
each picture is (trying to)
illustrate?**



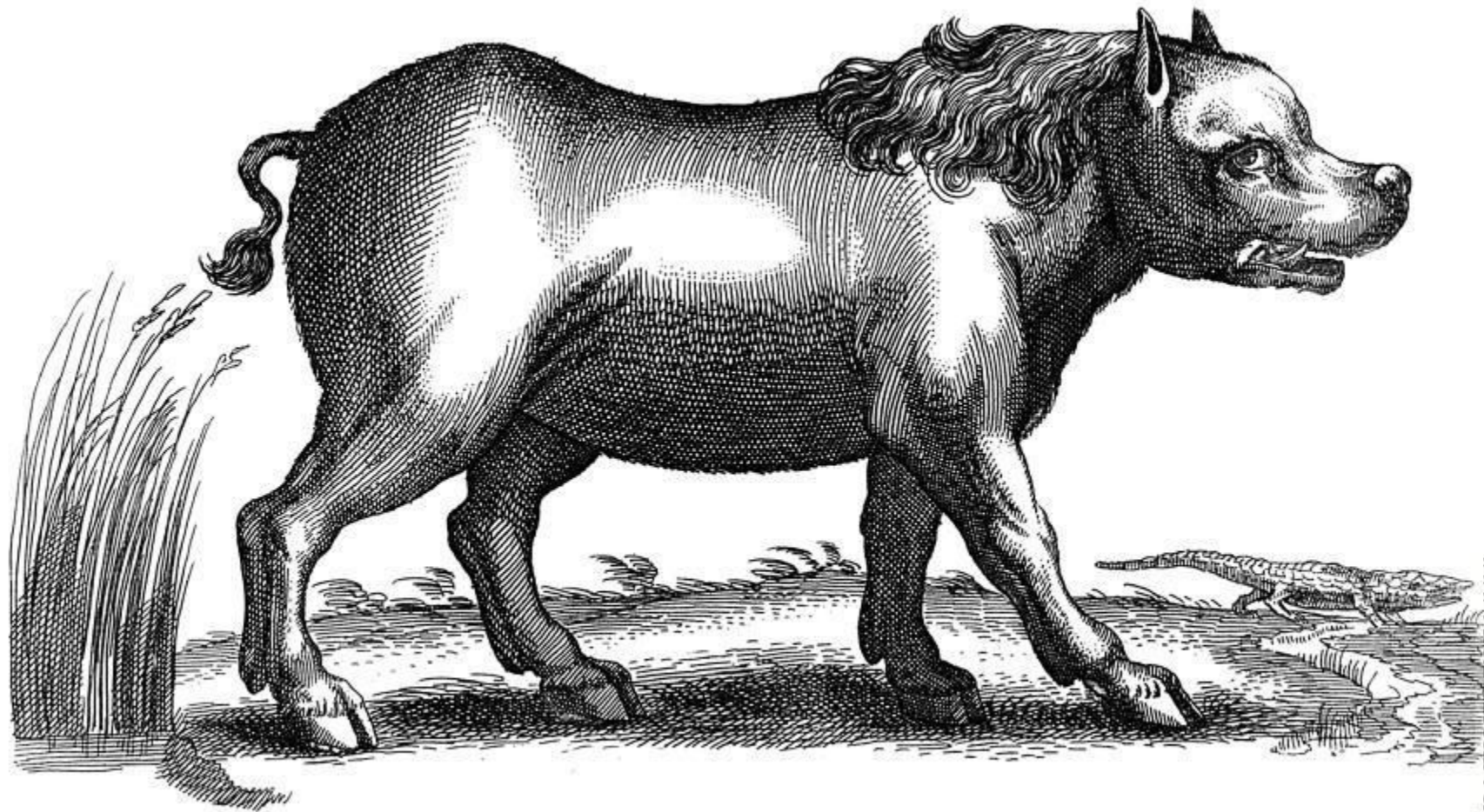


















neue zum erachten.





Castoreum



© Twitter / DannyDutch

