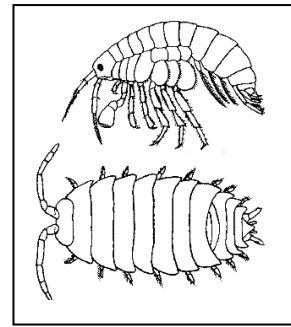


Animal Behaviour Lab

Test subject:

Armadillidium vulgare, also known as wood bugs, pill bugs, roly polly bugs.



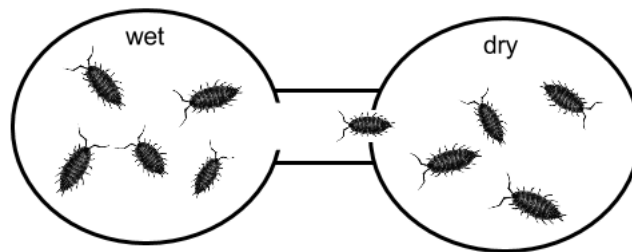
In Advance:

- Research wood bugs: Where do they live? What is their habitat like? What do they eat? How can you capture them and keep them alive?
- Capture enough wood bugs for experimental purposes.

Design an Experiment:

- Based on your research, develop a hypothesis regarding wood bug preferences and design a CHOICE CHAMBER to test it.

Example:



- Select TWO factors to investigate and design an experiment to test it.

Examples:

FACTOR	POSSIBLE MATERIALS
Temperature	Cold pack, warm pack, ice, warm water
Light	Lamps, flashlights, dark construction paper, aluminum foil
pH	HCl, NaOH, vinegar, baking soda
Substrate(surface)	Soil, sand, bark, cedar, gravel
Odor	Ammonia, perfume, lemon juice
Food	Potato, fish flakes, fruit, wood

- Consider that in science, testing variables separately provides the most useful evidence.
- Record data in chart form.

Example:

Time	# in Wet	# in Dry	Other Notes
0:00			
0:30			
1:00			
1:30			

Report Your Findings:

Create a scientific mini poster. Include the following:

1. Introduction
 - Research question. What were you trying to find out?
 - Background information. What did you learn about wood bugs in your background research?
2. Materials and Methods
 - Materials, procedure, variables (controlled, manipulated, responding), set up (include a labelled diagram).
3. Results
 - Data table, graph
4. Discussion
 - Summarize the goal of your experiment, suggest reasons for the observed behaviour. Consider this behaviour from an evolutionary point of view. How is this behaviour an advantage?
 - Suggest ways the experiment could be improved. Include possible sources of error.
5. References
 - Cite the references you used in APA style. (Use EasyBib.)

The poster template is divided into five main sections, each with a title and a brief description of its content:

- Introduction**: The introduction for this poster is the introduction to your research. It should include the research question, background information, and a hypothesis.
 - Research Question
 - Background
 - Hypothesis
- Materials and Methods**: This section should include the materials, procedure, variables (controlled, manipulated, responding), and set-up. It should also include a labelled diagram.
 - Materials
 - Procedure
 - Variables and Groups
 - Set-Up
- Results**: The results section should include the data table and graph.
 - Data Table
 - Graph
- Discussion**: The discussion section should include the summary of the goal of your experiment, suggest reasons for the observed behaviour, and suggest ways the experiment could be improved. It should also include possible sources of error.
- References**: This section should include the references you used in APA style.

The central part of the poster features a large title area with the text: **<Your Title Here>** and **<Authors>**. Below this, a subtitle reads: "The title should describe the work to the reader. Include the independent and dependent variables."