

Boost your Power Smarts

Week 3: Travelling through time



Next Boost your Power Smarts quiz:

“Travelling through time”

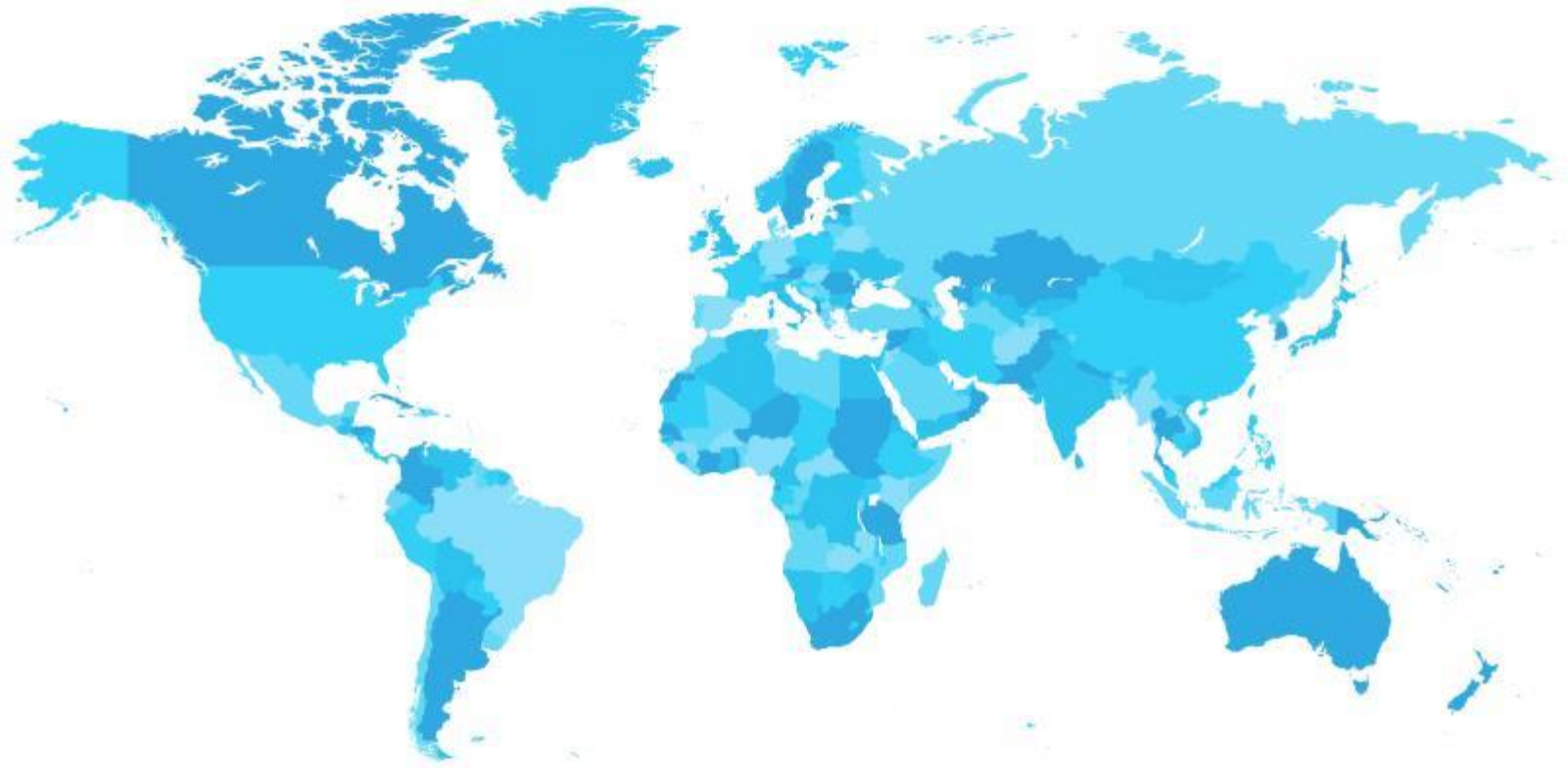
Tuesday, October 15 to
Thursday, October 17

8:00am – 3:00pm



Transportation has changed a lot over time

What are some ways humans travelled before cars?



History of transportation guessing game

One volunteer will draw the mode of transportation while the rest of the class guesses.

Guess the mode of transportation

Hint: people travelled short and long distances with this.



Answer: horse & cart



**Fun fact: the wheel was
invented around 3500 B.C.**

A high-angle, close-up photograph of a cobblestone street. Two parallel metal tram tracks run diagonally across the frame, curving to the right. The cobblestones are light-colored and arranged in a regular pattern. The tracks are made of dark metal and are set into the street surface.

Guess the mode of transportation

Hint: it runs on tracks but it isn't a train.

Answer: electric tram

A vintage electric tram is the central focus, moving along tracks on a cobblestone street. The tram is dark-colored with a prominent front headlight and a trolley pole extending to overhead wires. The street is lined with multi-story buildings, and several pedestrians are visible on the sidewalks. The scene is bathed in a warm, golden light, suggesting late afternoon or early morning. Overhead wires and street lamps are visible, creating a dense network of lines across the sky.

Fun fact 1: the first electric tram system in Canada started in Windsor, Ontario in 1886.

Fun fact 2: The SkyTrain in B.C.'s Lower Mainland is electric.

Guess the mode of transportation

Hint: the Model T was the first mass-produced one of these, in 1913.



Answer: gasoline engine car

Fun fact: the first practical gasoline-powered automobile was made in 1885 by Karl Benz in Germany.

Guess the mode of transportation

Hint: the first one of these to hold passengers was used in 1914.

Answer: jet airplane

Fun fact: the Wright brothers made the world's first sustained heavier-than-air flight in 1903.



Guess the mode of transportation

Hint: the first of these appeared in the 1830s, but are becoming a popular alternative to gas cars today.



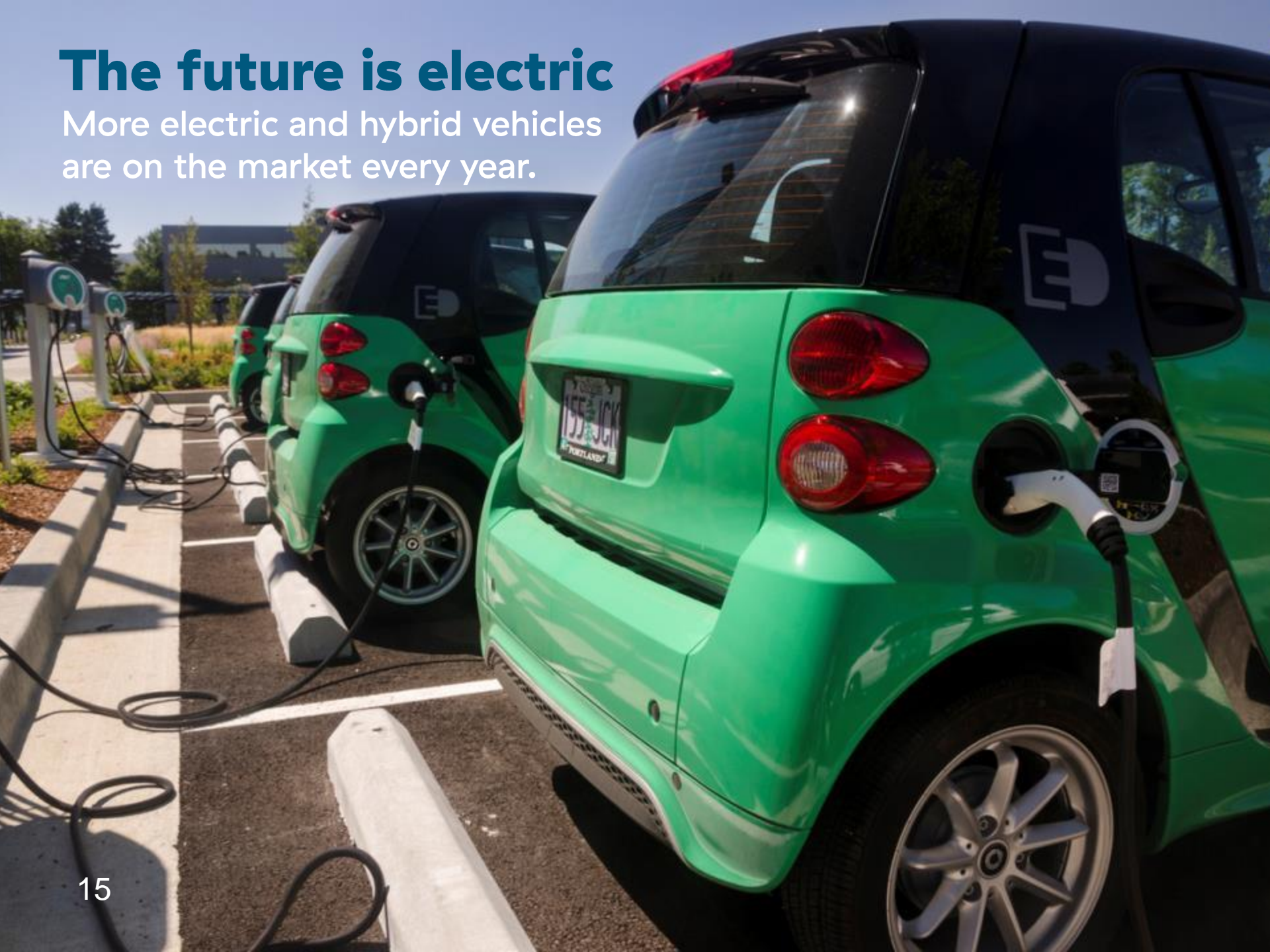
Answer: electric car



Fun fact: In B.C., there are approximately 1000 public electric vehicle (EV) charging stations.

The future is electric

More electric and hybrid vehicles are on the market every year.



5 quick EV facts

Electric vehicles can have many benefits

Fact 1

Charging an electric vehicle is less expensive than fueling up a regular car.

For example, it costs just over \$2 to charge a Nissan Leaf, at your home, with enough power to take it 100 km.



5 quick EV facts

Fact 2

DC fast charge stations can charge EVs from 0% to 80% in 30–40 min.

Fact 3

Level 2 chargers (240 V) can be installed at home or at businesses, and charge electric cars in 2–4 hours.



DC fast charger in Cranbrook, B.C.

5 quick EV facts

Fact 4

Electric vehicles have zero emissions while driving, reducing air pollution and CO₂ in the atmosphere.

They are a great choice in B.C. since 98% of the electricity we generate is clean energy.

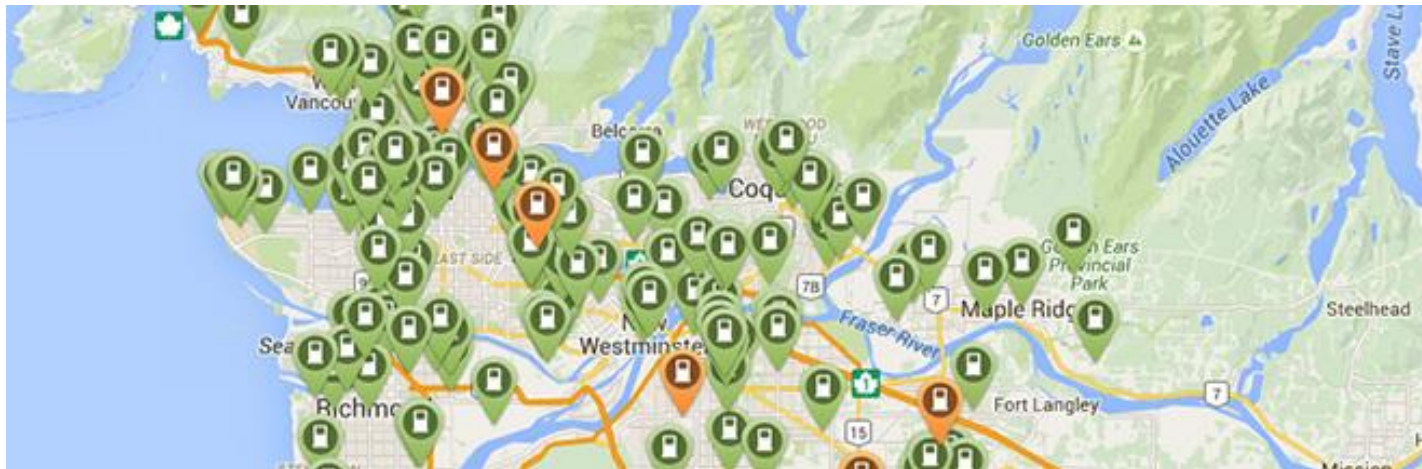


5 quick EV facts

Fact 5

B.C.'s fast charging network allows EVs to travel long distances.

Mapping apps are available to find convenient stations and the number of charging stations in the province continues to grow.



Liveable cities

Which one is a more liveable city? Why?



What makes this a liveable city or not?



Liveable cities, towns and communities

What kind of ideas do you have for a liveable community?



“Future perfect” art

Draw, paint, make collages – design your “perfect” community.

We can design our communities to be happy, healthy and eco-friendly places for everyone to enjoy.



