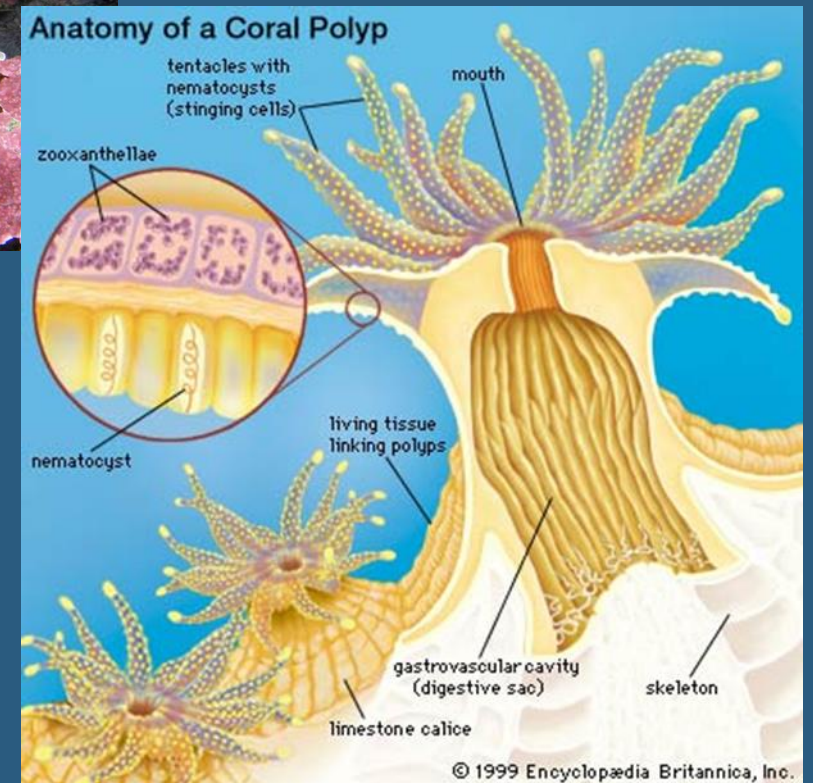


SEA ANEMONES AND CORALS

- Class Anthozoa “flower animal”
- Have only the polyp stage in their life cycle
- Central body surrounded by tentacles
- Many species are colonial



CORAL

- Individual polyps look like miniature sea anemones
- Most are colonial
 - Polyps grow together in large numbers
- Hard coral colonies
 - Motile larva lands on a hard surface
 - Develops into polyp
 - Polyp reproduces by budding
 - As colonies grow they secrete calcium carbonate/limestone
 - When different colonies grow next to each other we call it a coral reef
- Can also reproduce sexually



ECOLOGY OF CORALS

- Worldwide distribution of corals is determined by a few variables:
 - temperature
 - water depth
 - light intensity
- Currently suffering from Human Activity
 - Recreational divers
 - Ocean pollution
 - Climate change
- Importance of Coral Reefs

