



PHYLUM ANNELIDA

Segmented worms

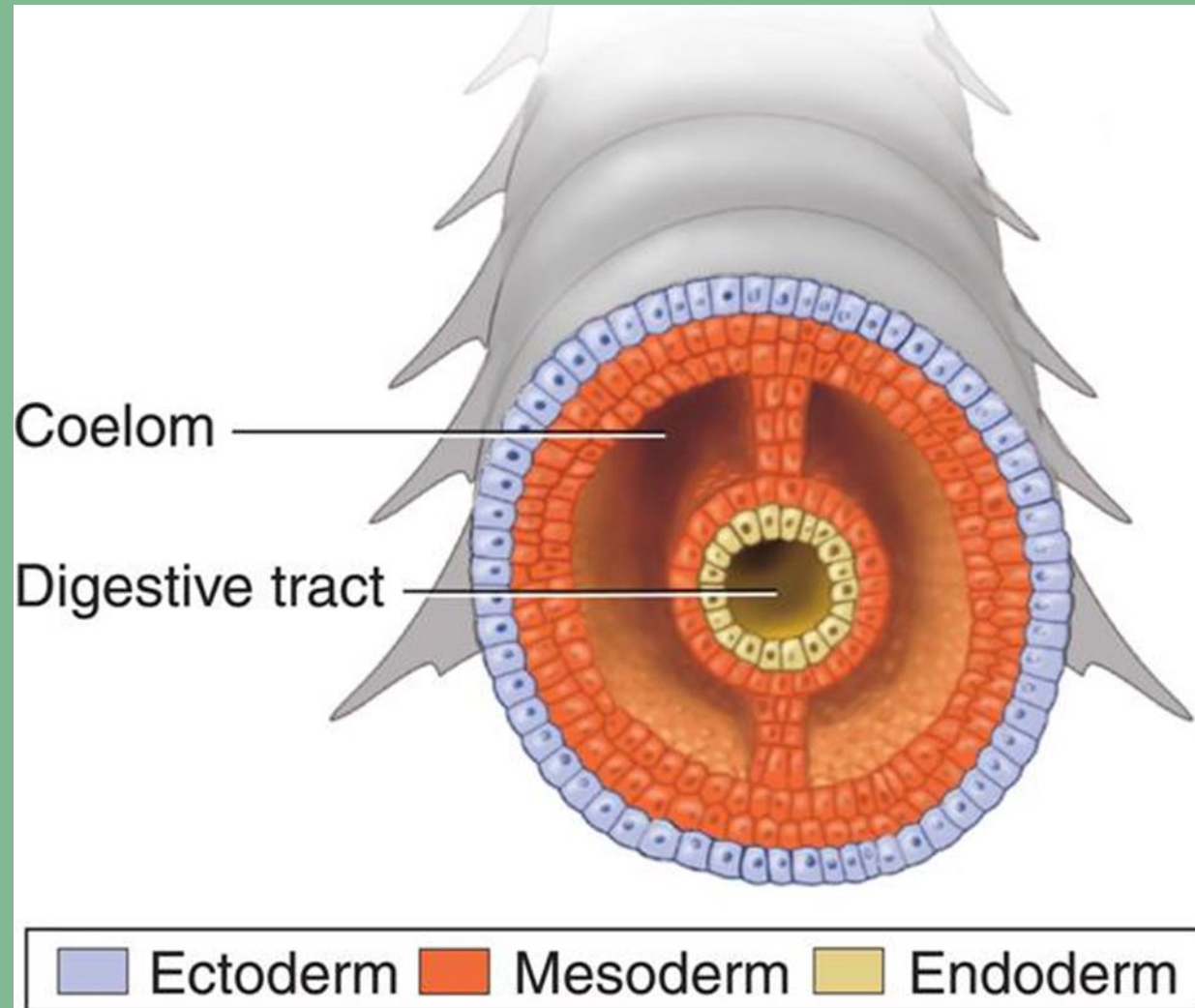


WHAT IS AN ANNELID?

- Worms with segmented bodies
- They have a true coelom that is lined with tissue derived from mesoderm.
- Bilateral symmetry
- 3 germ layers
- Complete digestive system
- Complex organ system

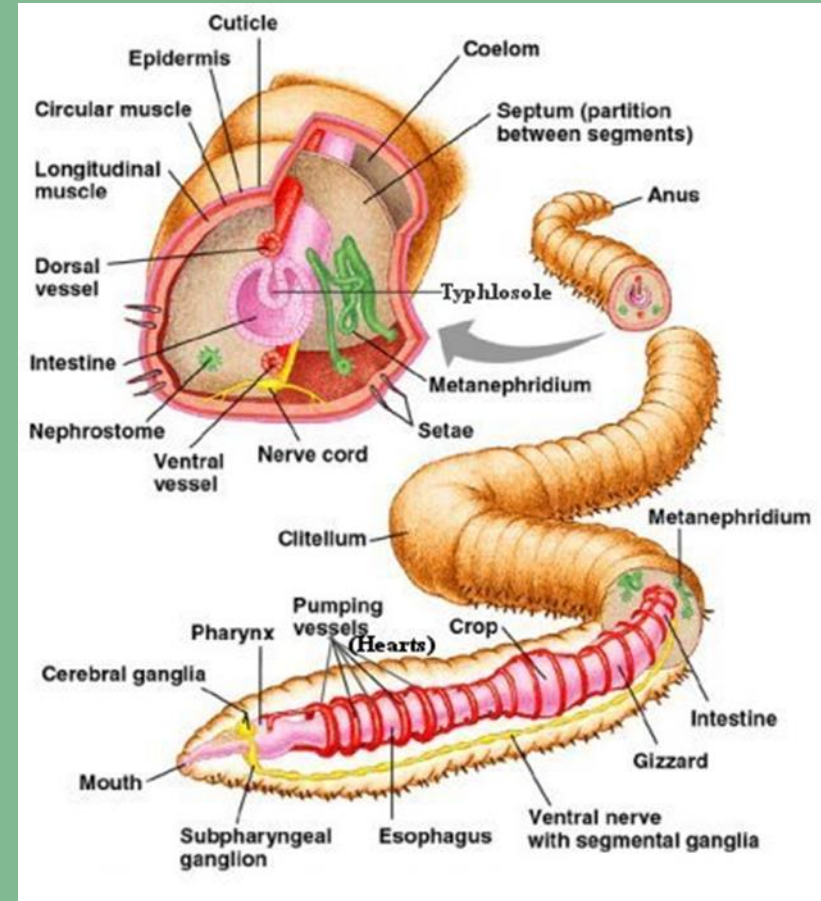


3 GERM LAYERS

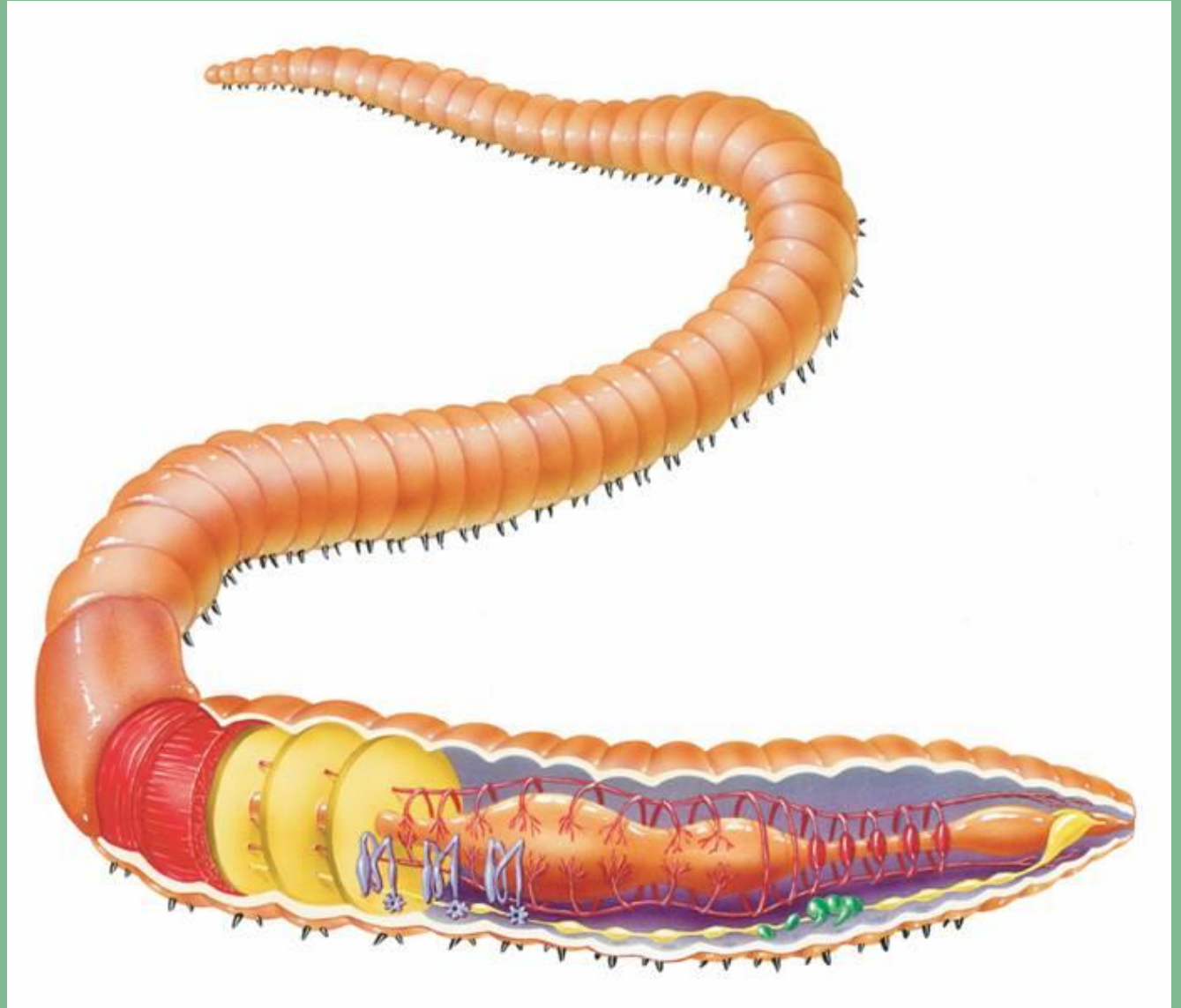


BODY STRUCTURE

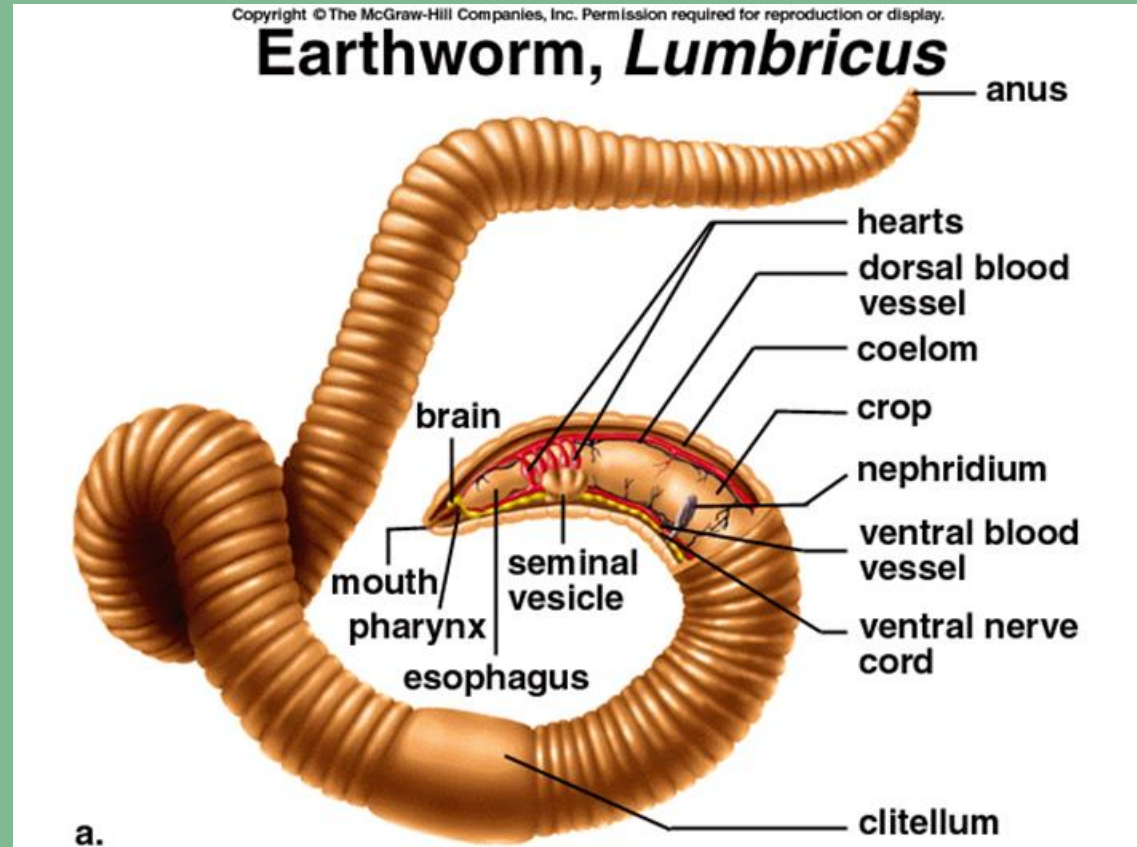
- The body of an annelid is divided into segments.
- Each segment is separated by septum
 - Internal walls between each segment.



- Body segments may carry eyes, antennae, other sense organs, or be specialized for functions such as respiration.
- Bristles called setae may be attached to each segment.
- Annelids have a tube-within-a-tube digestive tract that food passes through from the mouth to the anus.



- Annelids have complex organ systems.
- Many of these systems are unique because of the segmented body plan of this group.



FEEDING AND DIGESTION

- Carnivorous species
 - the pharynx usually holds two or more sharp jaws that are used to attack prey
 - Leeches
- Annelids that feed on decaying vegetation have a pharynx covered with sticky mucus
 - Earthworms
- Filter feeders

