

STAFF LESSON: DRAW A STAFF

Name: _____ Grade: _____

To do: Draw lines between the dots to make a five line staff. Make sure to draw a line through the dots at the end to make it a musical staff!

5 ●	●
4 ●	●
3 ●	●
2 ●	●
1 ●	●

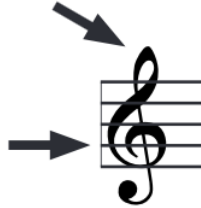
To do: Draw lines between the dots to make a five line staff. Number the lines from low to high.

— ●	●
— ●	●
— ●	●
— ●	●
— ●	●

STAFF LESSON: THE TREBLE CLEF

Name: _____ Grade: _____

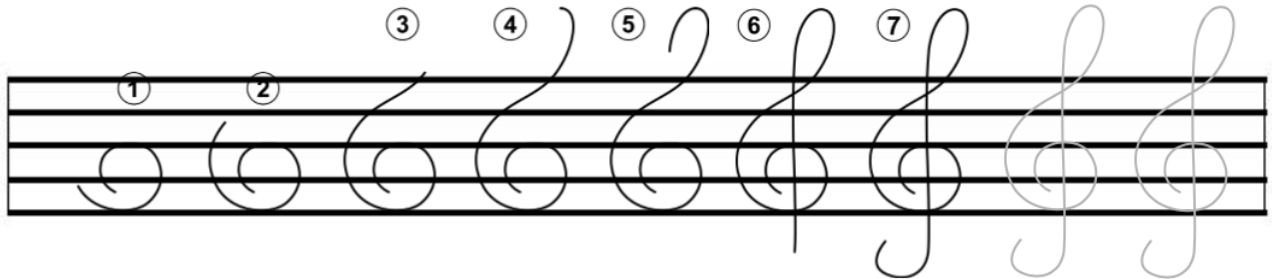
A clef is given as the beginning of each staff. The treble clef circles the note G.



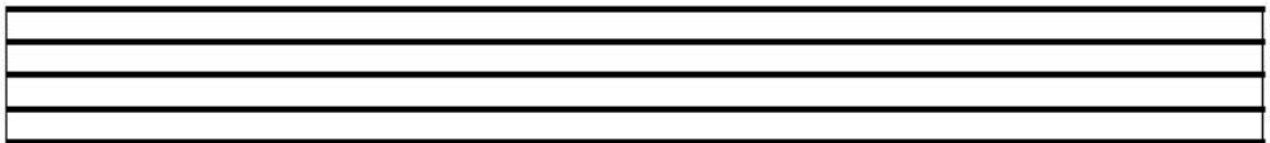
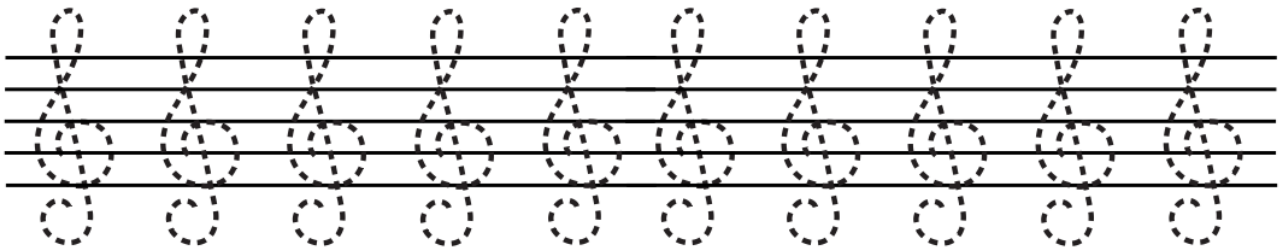
Drawing a treble clef is fun!

To do: On the staff below, follow the steps to draw your own clef! Don't forget to trace the last two clefs on the first staff!

Trace the last two!



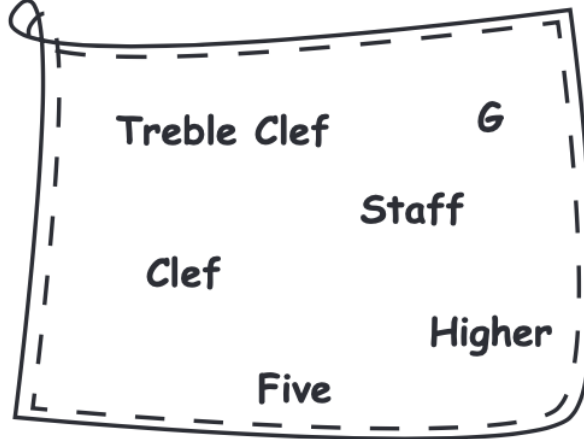
To do: On the staff below, trace the treble clefs provided, then try drawing five of your own using the steps above.



STAFF LESSON: FILL IN THE BLANKS

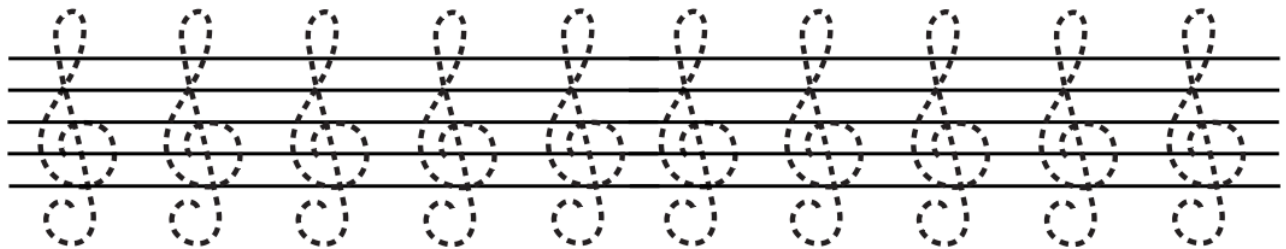
Name: _____ Grade: _____

To do: Choose the right word from the shape below to fill in the answers.



1. Music is written on a _____.
2. A _____ has _____ lines.
3. A _____ is given at the beginning of each _____.
4. The treble clef circles the note _____.
5. The _____ is used for _____ notes.

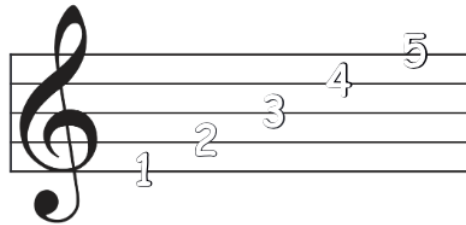
Let's Practice Some More!



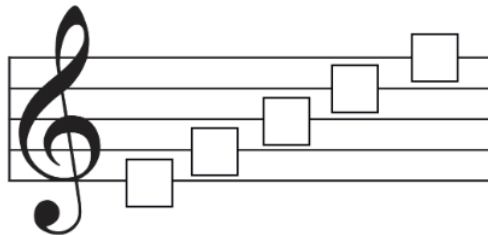
STAFF LESSON: LINES ON A STAFF

Name: _____ Grade: _____

The lines are numbered from the bottom to the top.



To do: Write the correct line number for each line.



To do: Name the correct line the note is on.

Line __

Line __

Line __

Line __

Line __

Line __

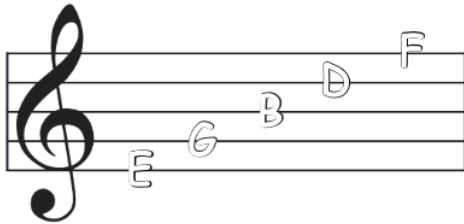
Line __

Line __

STAFF LESSON: NAME THE NOTES ON THE LINES

Name: _____ Grade: _____

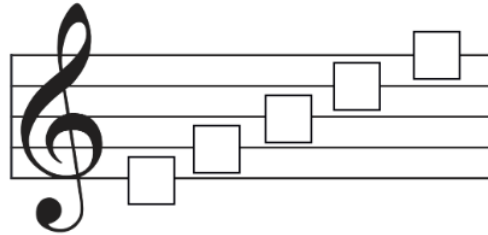
The notes on the lines are E, G, B, D, F.
You can remember the notes on the lines with this saying:
Every Good Boy Deserves Fudge



Can you make up your own saying?

- 5. F _____
- 4. D _____
- 3. B _____
- 2. G _____
- 1. E _____

To do: Write the correct note name for each line.

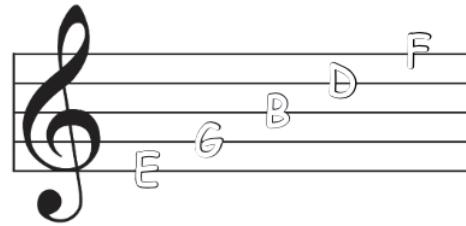
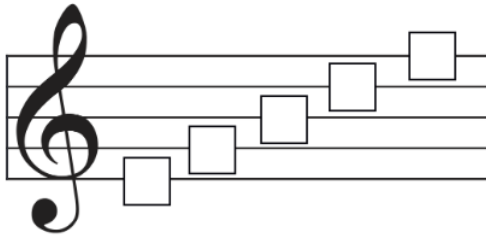


To do: Name the correct note on the line.

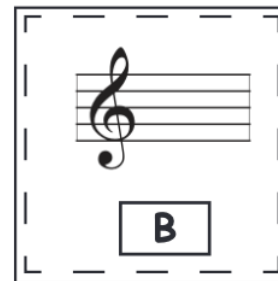
STAFF LESSON: DRAW THE NOTES ON THE LINES

Name: _____ Grade: _____

To do: Name the note on each line



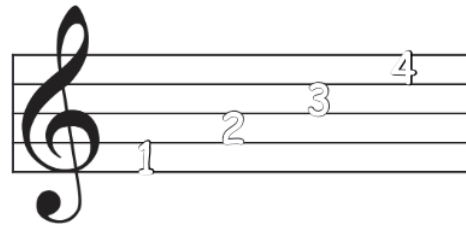
To do: Draw the note on the correct line.



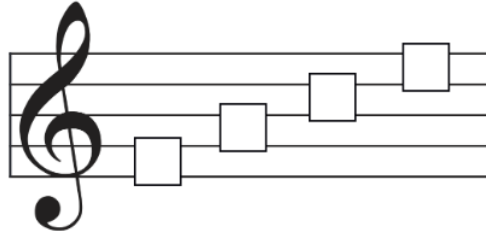
STAFF LESSON: SPACES ON A STAFF

Name: _____ Grade: _____

The spaces are numbered from the bottom to the top.



To do: Write the correct number for each space.



To do: Name the correct space the note is in.

Space __

Space __

Space __

Space __

Space __

Space __

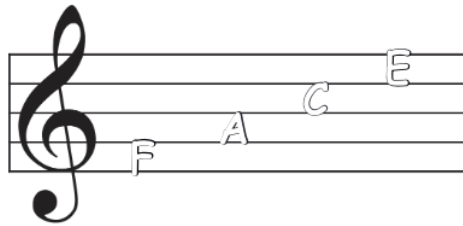
Space __

Space __

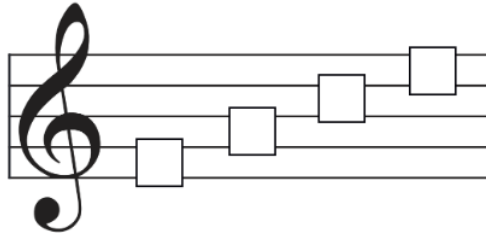
STAFF LESSON: NAME THE NOTES IN THE SPACES

Name: _____ Grade: _____

The notes on the lines are F, A, C, E. Use this poem to help you remember the names of the notes in the spaces: The notes in the space, spell your FACE.



To do: Write the correct note name for each space.



To do: Name the correct note on the space.

A musical staff with a treble clef. A note is placed on the first space (F). Below the staff is an empty rectangular box for labeling.

A musical staff with a treble clef. A note is placed on the second space (A). Below the staff is an empty rectangular box for labeling.

A musical staff with a treble clef. A note is placed on the third space (C). Below the staff is an empty rectangular box for labeling.

A musical staff with a treble clef. A note is placed on the fourth space (E). Below the staff is an empty rectangular box for labeling.

A musical staff with a treble clef. A note is placed on the first space (F). Below the staff is an empty rectangular box for labeling.

A musical staff with a treble clef. A note is placed on the second space (A). Below the staff is an empty rectangular box for labeling.

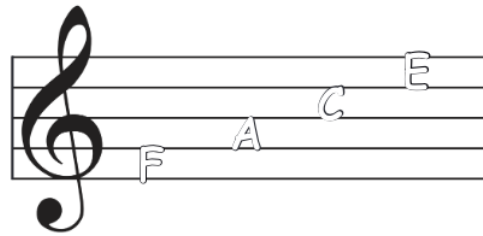
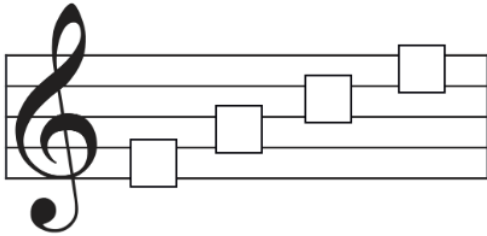
A musical staff with a treble clef. A note is placed on the third space (C). Below the staff is an empty rectangular box for labeling.

A musical staff with a treble clef. A note is placed on the fourth space (E). Below the staff is an empty rectangular box for labeling.

STAFF LESSON: DRAW THE NOTES IN THE SPACES

Name: _____ Grade: _____

To do: Name the notes in each space.



To do: Draw the note in the correct space.

A musical staff in treble clef enclosed in a dashed rectangular box. Below the staff is a small rectangular box containing the letter 'E'.

A musical staff in treble clef enclosed in a dashed rectangular box. Below the staff is a small rectangular box containing the letter 'F'.

A musical staff in treble clef enclosed in a dashed rectangular box. Below the staff is a small rectangular box containing the letter 'A'.

A musical staff in treble clef enclosed in a dashed rectangular box. Below the staff is a small rectangular box containing the letter 'C'.

A musical staff in treble clef enclosed in a dashed rectangular box. Below the staff is a small rectangular box containing the letter 'E'.

A musical staff in treble clef enclosed in a dashed rectangular box. Below the staff is a small rectangular box containing the letter 'F'.

A musical staff in treble clef enclosed in a dashed rectangular box. Below the staff is a small rectangular box containing the letter 'A'.

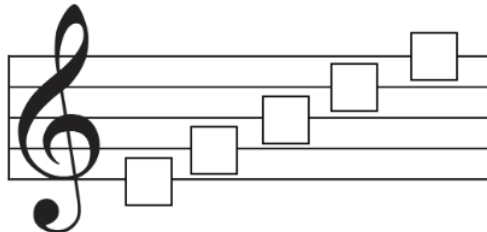
A musical staff in treble clef enclosed in a dashed rectangular box. Below the staff is a small rectangular box containing the letter 'F'.

A musical staff in treble clef enclosed in a dashed rectangular box. Below the staff is a small rectangular box containing the letter 'C'.

MORE PRACTICE: NOTES ON THE LINES

Name: _____ Grade: _____

To do: Write the correct note name for each line.



To do: Draw the note on the correct line.

Musical staff with a treble clef and five empty lines. Below the staff is a box containing the letter **G**.

Musical staff with a treble clef and five empty lines. Below the staff is a box containing the letter **B**.

Musical staff with a treble clef and five empty lines. Below the staff is a box containing the letter **E**.

Musical staff with a treble clef and five empty lines. Below the staff is a box containing the letter **E**.

Musical staff with a treble clef and five empty lines. Below the staff is a box containing the letter **D**.

Musical staff with a treble clef and five empty lines. Below the staff is a box containing the letter **G**.

Musical staff with a treble clef and five empty lines. Below the staff is a box containing the letter **B**.

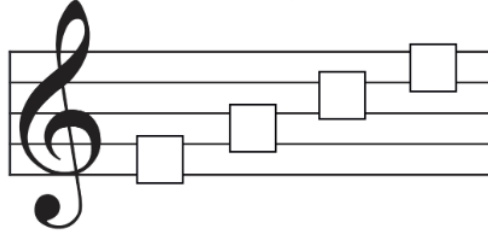
Musical staff with a treble clef and five empty lines. Below the staff is a box containing the letter **F**.

Musical staff with a treble clef and five empty lines. Below the staff is a box containing the letter **D**.

MORE PRACTICE: NOTES IN THE SPACES

Name: _____ Grade: _____

To do: Write the correct note name for each space.



To do: Draw the note in the correct space

Musical staff with a treble clef and a dashed box below it containing the letter **F**.

Musical staff with a treble clef and a dashed box below it containing the letter **A**.

Musical staff with a treble clef and a dashed box below it containing the letter **C**.

Musical staff with a treble clef and a dashed box below it containing the letter **C**.

Musical staff with a treble clef and a dashed box below it containing the letter **A**.

Musical staff with a treble clef and a dashed box below it containing the letter **F**.

Musical staff with a treble clef and a dashed box below it containing the letter **E**.

Musical staff with a treble clef and a dashed box below it containing the letter **C**.

Musical staff with a treble clef and a dashed box below it containing the letter **A**.

MORE PRACTICE: NAME THE NOTES ON THE STAFF

Name: _____ Grade: _____

To do: Name the notes on the staff.

STAFF LESSON: LEDGER LINES

Name: _____ Grade: _____

Notes that are too high or too low to fit on the staff use ledger lines.

A musical staff with a treble clef. The notes are: C (below 2 ledger lines), D (below 1 ledger line), E (below 1 ledger line), F (below 1 ledger line), G (below 1 ledger line), A (below 1 ledger line), B (below 1 ledger line), C (below 1 ledger line), D (below 1 ledger line), E (below 1 ledger line), F (below 1 ledger line), G (below 1 ledger line), A (below 1 ledger line). Below the staff is a row of boxes containing the letters: C, D, E, F, G, A, B, C, D, E, F, G, A. An arrow points from the first note (C) to the first 'C' box, and another arrow points from the text above to the last note (A).

To do: Draw a treble clef and practice writing notes with ledger lines (C and A).

A blank musical staff with a treble clef. A note is drawn on the first ledger line below the staff, with a small circle above it.

To do: Name the notes on the staff.

A grid of eight musical staves, each with a treble clef and a note on a ledger line. The notes are: C (below 2 ledger lines), D (below 1 ledger line), E (below 1 ledger line), F (below 1 ledger line), G (below 1 ledger line), A (below 1 ledger line), B (below 1 ledger line), C (below 1 ledger line). Below each staff is a small rectangular box for writing the note name.

